



## GREY AREA LIGHT FABRIC

## WHITE AREA FOR SHOULDER STRIPES A DIFFERENT COLOR MUST BE USED

WHITE X/133/020	ROYAL BLUE X/133/041	NAVY BLUE X/133/042	YELLOW X/133/055	RED X/133/061	BLACK X/133/071	SILVER X/133/080	GREY X/133/425C
CYAN X/133/244	GOLD X/133/002	FLUO YELLOW X/133/099	GREEN X/133/032	DARK GREEN X/133/033	FLUO GREEN X/133/039	DARK GREY X/133/082	ORANGE X/133/091

## GREY AREA SHINE SATIN FABRIC

WHITE X/132/020	ROYAL BLUE X/132/041	NAVY BLUE X/132/042	RED X/132/061	BLACK X/132/071	SILVER X/132/080	DARK GREY X/132/082	PINK X/132/009	VIOLET X/132/001
LIGHT BLUE X/132/040	FLUO GREEN X/132S/039	DARK GREEN X/132/033	DARK RED X/132/069	BORDEAUX X/132/070	ORANGE X/132S/091	GOLD X/132/002	YELLOW X/132/051	LEMON X/132/066

## CYAN AREA STRETCH DRY SYSTEM FABRIC

WHITE X/602/020	ROYAL BLUE X/602/041	NAVY BLUE X/602/042	RED X/602/061	DARK GREY X/602/082	BLACK X/602/071	SILVER X/602/080	FLUO YELLOW X/602/099
--------------------	-------------------------	------------------------	------------------	------------------------	--------------------	---------------------	--------------------------

## PINK AREA INTERLOCK FABRIC

WHITE X/102/020	SILVER X/102/081	ROYAL BLUE X/102/041	NAVY BLUE X/102/042	YELLOW X/102/051	RED X/102/061	ECRÙ X/102/028	DARK GREY X/102/082	BLACK X/102/071
--------------------	---------------------	-------------------------	------------------------	---------------------	------------------	-------------------	------------------------	--------------------

## YELLOW AREA WRIST AND ANKLE CUFFS FABRIC

WHITE X/105/N/020	SILVER X/105/N/081	ROYAL BLUE X/105/N/041	NAVY BLUE X/105/042	RED X/105/N/061	ECRÙ X/105/N/022	DARK GREY X/105/N/082	BLACK X/105/N/071
----------------------	-----------------------	---------------------------	------------------------	--------------------	---------------------	--------------------------	----------------------

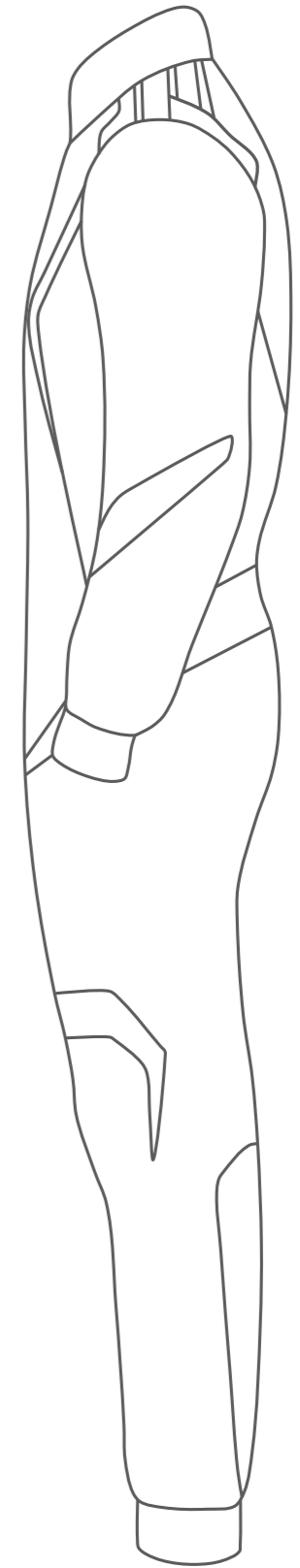
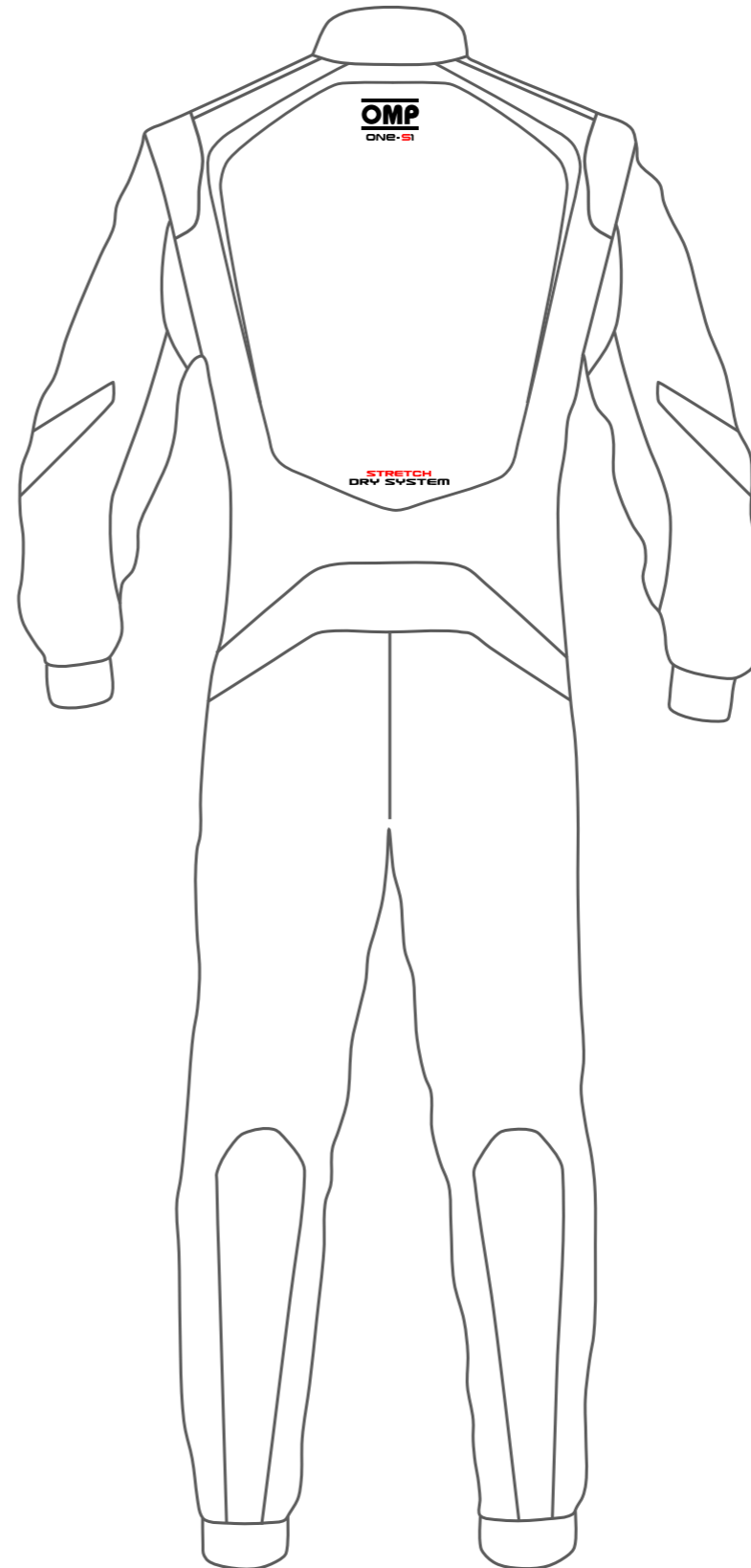
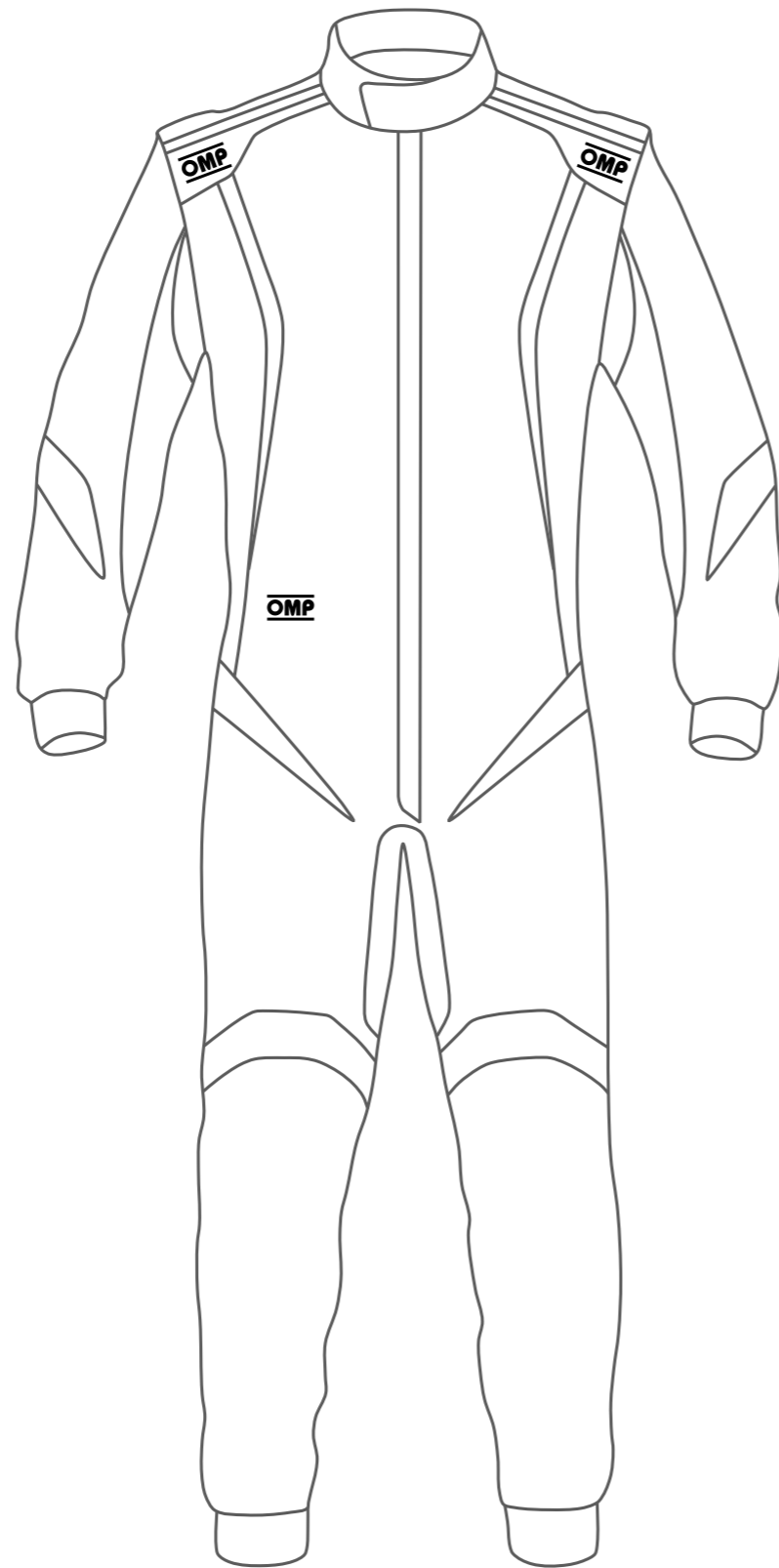


CUSTOMER: \_\_\_\_\_

TEAM: \_\_\_\_\_

DRIVER NAME: \_\_\_\_\_

CUSTOMIZED SUIT CONFIGURATOR



IA01852

ONE-S1

© OMP RACING SPA - ALL RIGHTS RESERVED

DATE: \_\_\_\_\_ REV. \_\_\_\_\_

THIS DESIGN IS THE INTELLECTUAL PROPERTY OF OMP RACING SPA - ANY REPRODUCTION WITHOUT PERMISSION WILL BE PROSECUTED TO THE FULLEST EXTENT OF THE LAW. By approving this sketch, the customer acknowledges that, during the process of manufacturing, variations may occur in colors and other minor aspects, because of the use of different technologies for the acquisition and reproduction of images, and for making of the suit itself. OMP is not responsible for such variations. For further information: [www.ompracing.com](http://www.ompracing.com)